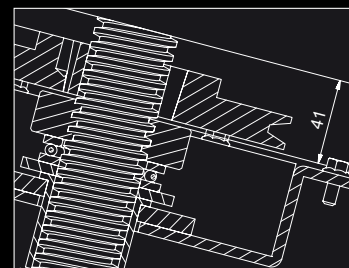




*In Living homes, age simply doesn't matter.*



*Two floors are transformed into one with  
Aritco's residential lifts.*



**Moving people. Elevating ideas.** Since 1995, Aritco Lift AB has been dedicated to inspired mobility. Everything we do, from development and production to delivery and support is as simple as that.

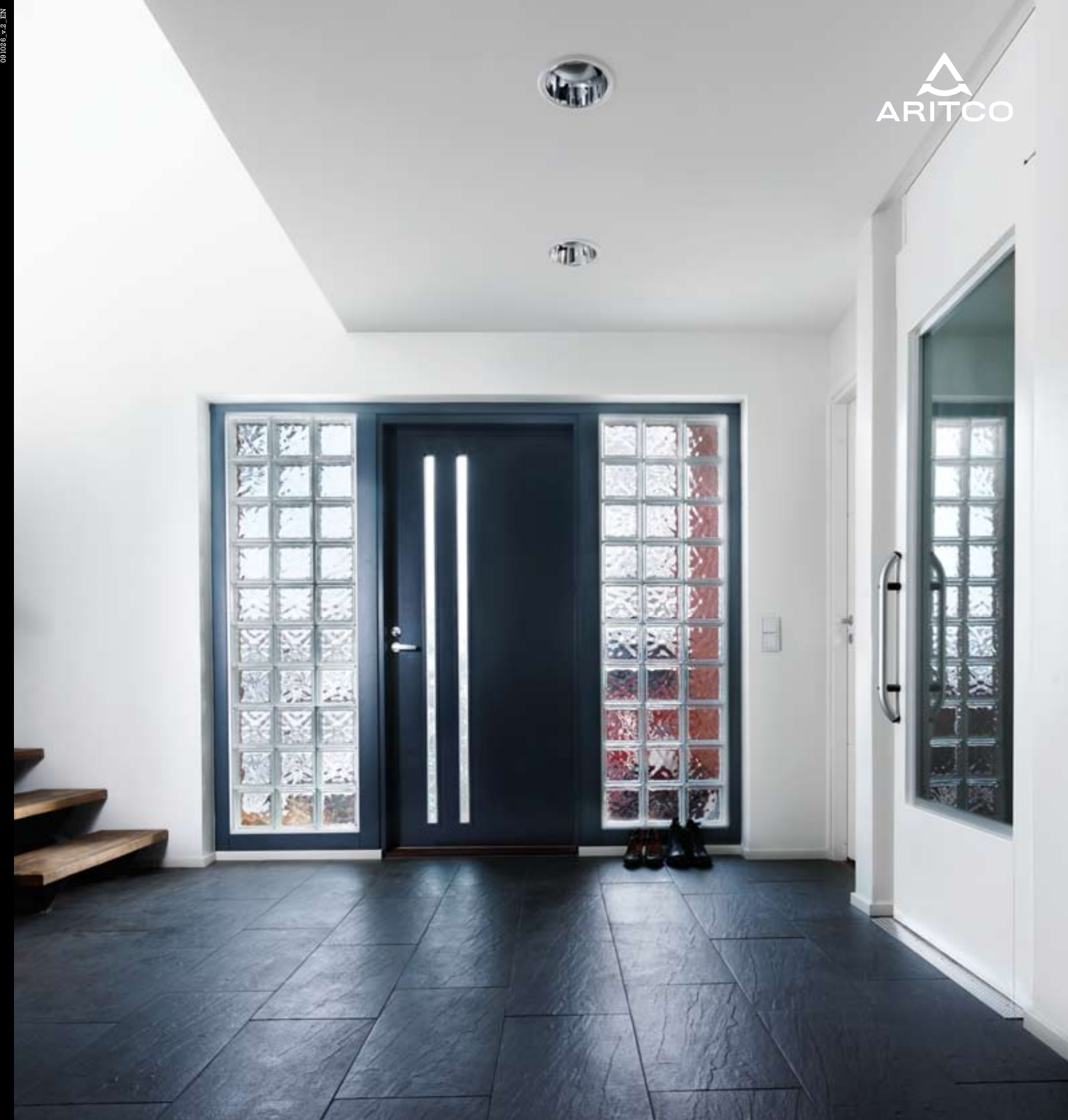
**We deliver platform and residential lifts** that bring exceptional value in design, comfort and simplicity. Versatile in style, fit to any environment. Quality and safety that is assured in construction and operation. An experience, in installation and use, underlined by ease. Our lifts are found in commercial and public spaces as well as homes all around the world.

**With a long tradition** of collaboration with architects, contractors and property owners, we understand that success comes with market insight. To that, we add experience and know-how as well as a steadfast professional commitment.

**ARITCO Lift AB**  
Energivägen 7  
196 37 Kungsängen  
SWEDEN

T: +46 8 120 401 00  
F: +46 8 120 401 99  
E: info@aritco.se

[www.aritco.com](http://www.aritco.com)



**Living Collection**  
Residential lifts for private homes



# Enter a new style of living.

In design, comfort and simplicity, our inspiration comes from you. A preference in style and colour. A decor that complements and blends into the environment. A higher level of convenience and mobility, so that your home works just right for you and not the other way around. An investment that doesn't cost any more than a Jacuzzi, and is considerably less expensive than a new kitchen. A residential lift that adds value. That's Living.

*"Whether you are looking for everyday accessibility, adapting your home for old and young alike, or simply want the very best in modern accommodations, Aritco Living Collection is the choice of a lifetime."*

Tommy Löwback, CEO

Combining versatility in form and function with ease of installation and use, Aritco Living Collection lifts are as carefree as they are ideally fashioned to your home. Developed in close cooperation with architects and partners, great care is taken from development and production through installation. You get only the highest standards of quality and safety.

## It's up to you

Aritco Living Collection brings a range of extraordinary possibilities, with lifts that can be seamlessly installed in a new house or your current home. Consider all the ways you might elevate your lifestyle. Consider a choice for Living.

Aritco Living Collection lifts are in operation, problem free, in homes all around the world. They are made to fit into just your way of life.

## Future proof

Stay in your home as long as you like. With our residential lifts, you can give yourself the convenience you deserve and freedom from troublesome stairways.

## Generation

Long visits from grandparents? Extra living space for your children? Guest accommodations? The Living Collection is just the answer to make your home as comfortable as possible for you and the different generations of your extended family.

## Modern

Modern living is about making the best of every day, in a home that has all the conveniences, maximum use of space and contemporary design at its foremost. Our residential lifts can convert your home to the envy of everyone in your neighbourhood.



*It's often the details that make the design. We have many to choose from.*

## At your service

Aritco Living Collection is sold in standardised packages or tailored to your specifications, with a range of options in design and function. Manufactured in modules, the lifts require very little construction work and can be installed in existing homes or new builds, internally or externally. Installation takes a few days. Space requirements are minimal. The necessary machinery and the electrical system are housed inside the shaft enclosure.

Movement between floors is safe and easy. The operation console houses light, large tactile push buttons with emergency stop and alarm functions. All edges are guarded by sensors, and in the case of an emergency, the lift can be lowered by a battery-driven system to the closest floor.

*For a personal consultation, contact a distributor near you. Our distributors worldwide can be found at [www.aritco.com](http://www.aritco.com)*



LIVINGCL4000

## LIVING CLASSIC

LIVING CLASSIC is the most cost efficient residential lift in the Living Collection. It fulfils the basic need for lifting from one room to another, for example from your hallway to your bedroom. LIVING CLASSIC is particularly favoured among people building a future-proof home.



LIVINGM4000

## LIVING MINI

LIVING MINI is the smallest lift on the market, and particularly suitable for limited living spaces. It works well, for example, in the middle of a staircase or in a wardrobe. You can select from a variety of options to ensure the lift truly blends into the environment.



LIVINGC7000

## LIVING CUSTOM

LIVING CUSTOM is designed to fulfil your every desire. Why not fit it next to your fireplace, together with marble floor and custom designed kitchen? You can choose from many options such as glass walls, different floorings and details in stainless steel. LIVING CUSTOM comes in two models. LIVING CUSTOM 4000 has the smallest dimensions. With LIVING CUSTOM 7000, it is possible to have a half door at the upper level.



LIVINGXTR7000

## LIVING EXTERIOR

LIVING EXTERIOR is a good choice when a residential lift is desired or needed, but there is no space inside. It is designed to manage all types of weather. LIVING EXTERIOR comes in two models. LIVING EXTERIOR 2000 lifts up to 3 meters and LIVING EXTERIOR 7000 lifts up to 12 meters.